

# ASTERIA SCONCE LIGHT

## Luminaire Specifications:

**Voltage:** 12V

**Construction:** Machined Copper,  
or 316 Marine Grade Stainless Steel

**Weight:** 2.35 lbs

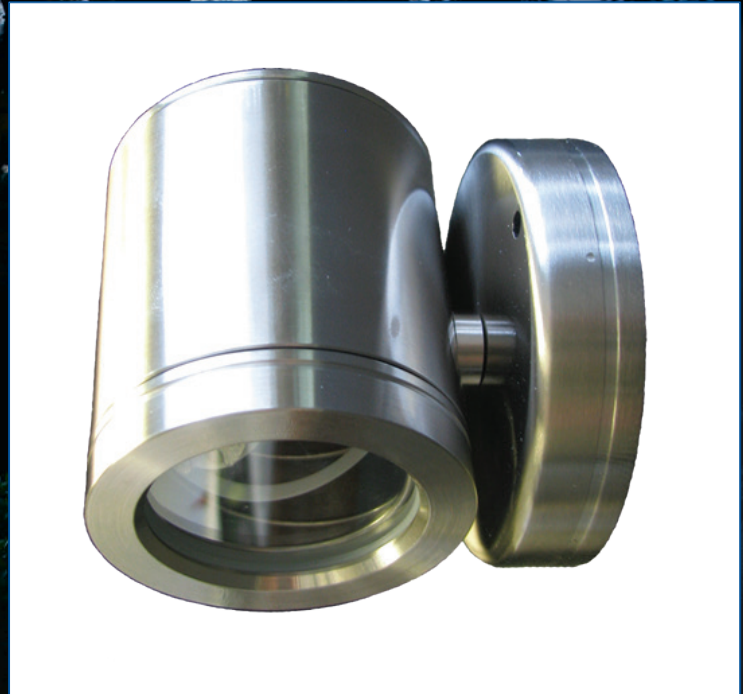
**Socket:** Ceramic MR16 Socket

**Wattage:** Maximum 20 Watts

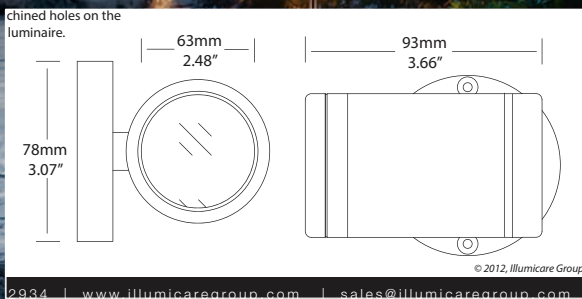
**Lens:** High Tempered, Clear Flat 1/8" Glass

**Mounting:** Fixed Copper Bracket

*Lamp Not Included*



## WTASTERIA



Asteria, Illumicare's wall mount directional luminaire, is a precision engineered light fixture designed for architectural lighting applications where you need the fixture to be elegant, yet unobtrusive. The contemporary design of the luminaire compliments most architectural finishes and masonry.

Illumicare's directional luminaires use multiple MR16 lamps protected by 5mm (1/8") lenses to achieve a soft, ambient light.

Asteria, offered in both 316 marine grade stainless steel and solid machined copper, is designed for mounting on the surface of masonry, stone or wood.

  
**LandLight**  
Enhance The Night

**EASILY CONVERTED  
TO LED WITH THE  
APPROPRIATE BULB**

**Enhance The Night - [www.landlight.ca](http://www.landlight.ca)**